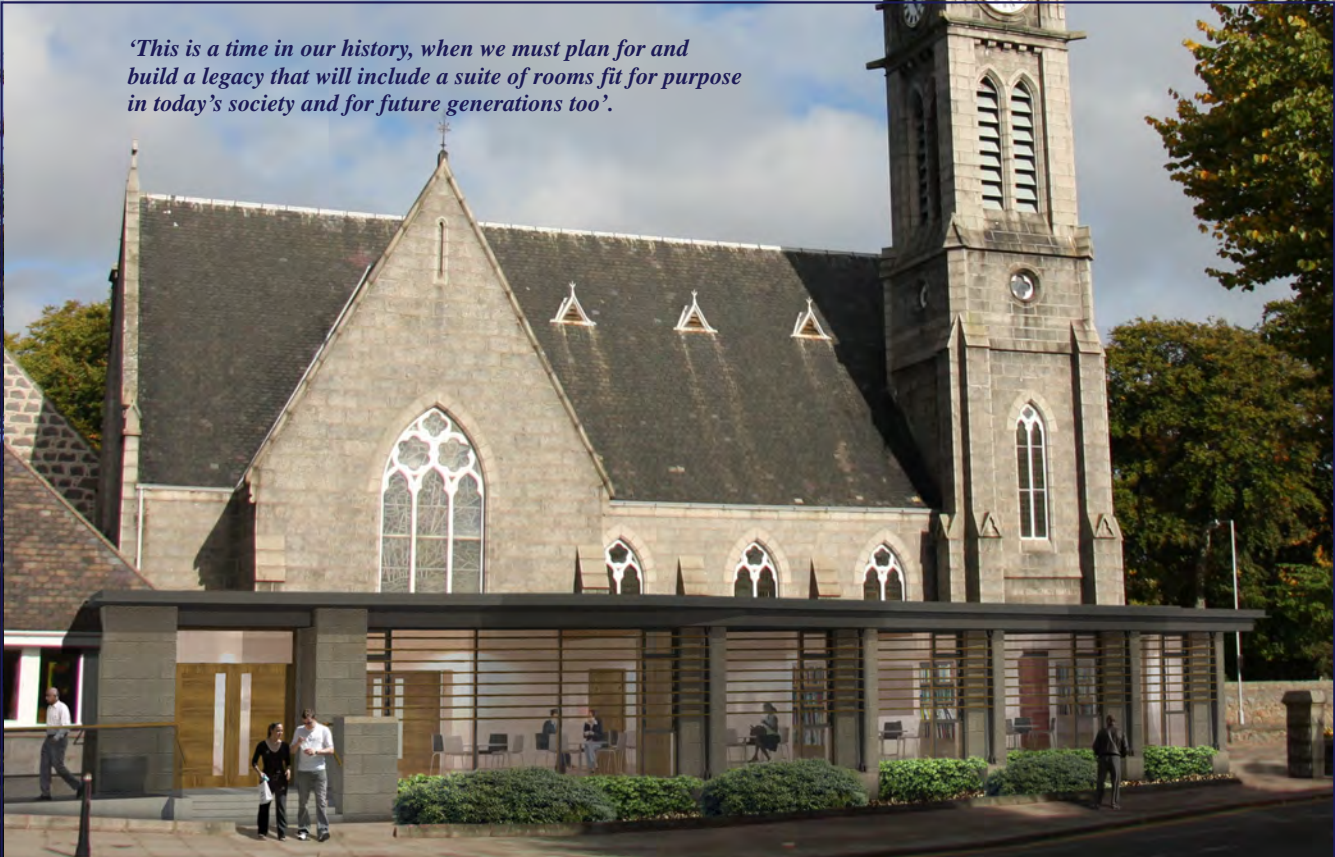




AT THE *HEART* OF THE COMMUNITY



'This is a time in our history, when we must plan for and build a legacy that will include a suite of rooms fit for purpose in today's society and for future generations too'.



BUILDING FOR

Mannofield Church began life in 1882 and is part of the Church of Scotland. Situated in the City of Aberdeen and part of the Presbytery of Aberdeen it is the largest Church of Scotland congregation in the City with 1500 members.

In our life and worship we seek to make the very best contribution we can offer to the community we serve and the city in which we exist, as we allow the spirit of God's Love to direct us towards service to others and the provision of a warm and open welcome to our building and activities.



THE FUTURE

The Goals we seek:-

- To play a crucial part in the community by providing the opportunity and encouragement for people to worship in a friendly and supportive atmosphere.
- To capture the imagination of all generations living in our community and welcome them into active involvement within our church family.
- To use the gift of our building and its situation to make our church a place of busy activity and a hub for care and support for the community around us.

VISION FOR OUR CONGREGATION

After taking stock of our buildings during a recent survey and assessing their usefulness in the light of an ambitious vision for the future life of the congregation and its relationship with the community we recognised that improvements would allow for more progressive and appropriate community outreach and involvement.

The buildings surrounding the sanctuary have not been modernised or updated for a considerable number of years. The layout of rooms and corridors do not allow for the flexibility required for multifunction use. Nor do they create the sense of welcome and comfort that allows for an uplifting experience for regular participants and visitors.

Improvements in our accommodation alongside a focus on 'service to the community' would allow us to offer a more appropriate response to the needs of our local community.

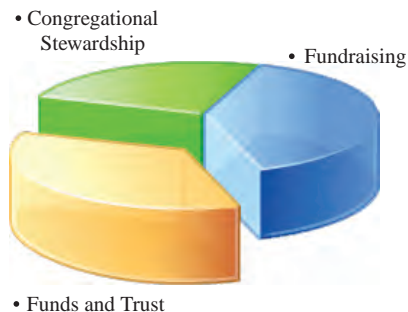
Assessing the local needs of our community Mannofield Church recognised its responsibility to foster a stronger sense of community focus and the following outcomes were envisioned:-

Intended Outcomes

- Improved facilities for all generations using the church for worship and other activities that provide greater comfort and usability.
- Greater interaction with the local community through increased activities and events geared towards support for the individual.
- Creation of a hub for young people to use as a meeting place that allows them to feel safe and valued.
- A facility that is used by parents with young children who benefit from an opportunity to meet together and which is open during working hours.
- A centre for the elderly situated at the heart of a community which is easily accessed and which provides a meeting place for fellowship and supportive contact with others.
- A community facility out of which partner agencies can provide care provision to clients locally.

FUND RAISING STRATEGY

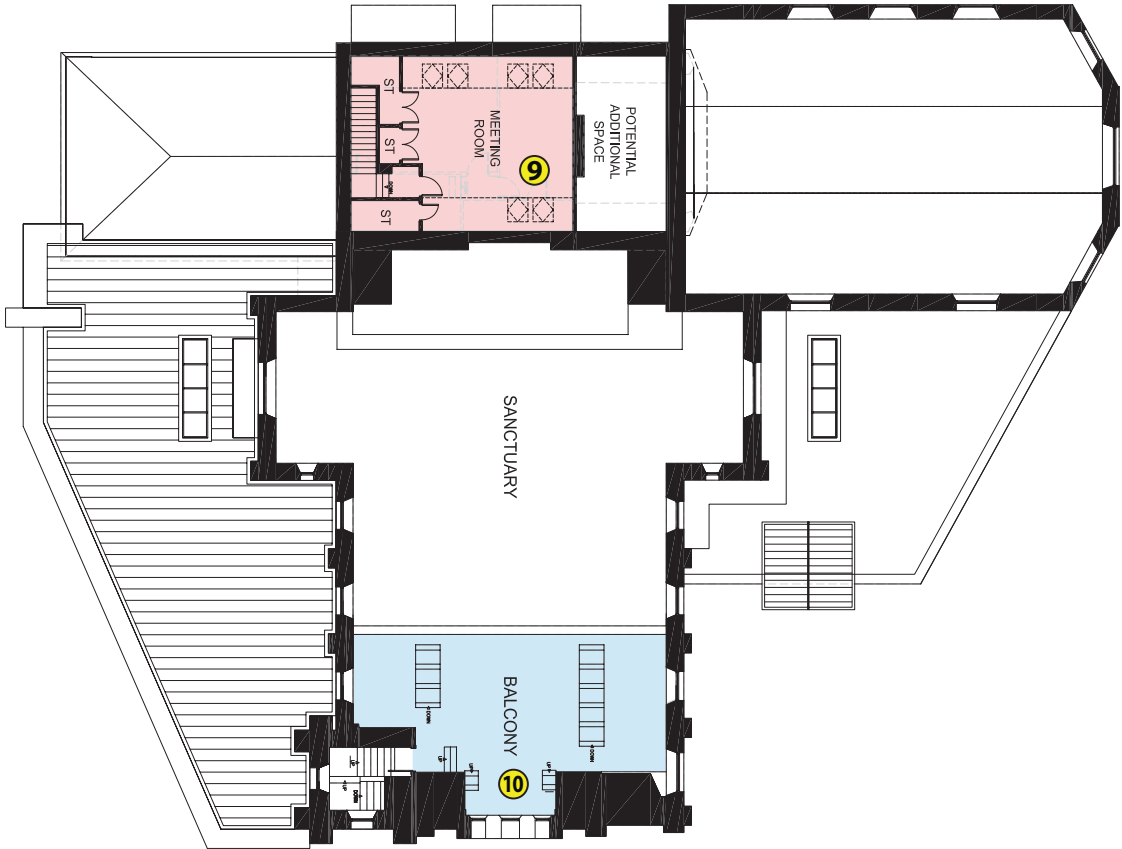
An estimated total of **£1.5 Million** has been set against the cost of the capital expenditure to make the proposed building adjustments.



The Congregation seeks to raise this total amount through a Fundraising strategy devised around three main areas:

- **Congregational Stewardship** - raising funds through specific appeals to the congregation. This might include the opportunities for one-off gifts and monthly or weekly giving programmes specifically for the Development Fund.
- **Funds and Trust** - identifying and making the case to appropriate bodies.
- **Fundraising** - relationship building with corporate bodies and individuals who may have a shared desire to grow and resource communities of support and opportunity.





LEGEND

- | | |
|--|---|
| ① Community area 2 - can be isolated | ⑥ Kitchen |
| ② Community area and servery | ⑦ Entrance hall, welcome area & administrative centre |
| ③ Foyer - entrance and window to sanctuary | ⑧ Large hall with improved storage |
| ④ Sanctuary - flexible seating | ⑨ Meeting room |
| ⑤ Chancel area - hidden mobile stage | ⑩ Balcony - continued pew seating |

DEVELOPMENT PLAN

To meet the outcomes of our Vision it was recognised that while the building has been used well throughout its history it was no longer suitable in its present form to allow the congregation to work in appropriate ways for the society it supports now, and in the future.

Mackie, Ramsay and Taylor, Architects, Aberdeen was employed to work with the Kirk Session (the congregation's management body) as the current building was evaluated against the agreed Vision and Goals.

Areas for improvement were identified and additional aspects proposed that would allow for more effective use of our facilities and the provision of accommodation more suitable to community use.

The agreed plan meets these desired outcomes in the following ways:-

- Improved access and circulation especially for those with physical restrictions.
- A modernisation of accommodation and fabric providing a more attractive and comfortable feel.

- New, revamped and more clearly defined entrance points that allow for more natural flow of people between the building and its environs.
- Re-working of existing space to allow for greater flexibility of use.
- Additional space to allow for greater utilisation by congregation and community groups and the opportunities to house new activities that meet the needs of current and future population.
- Improved and additional toilet provision.
- Additional storage
- Creation of an annexe to house a coffee shop which would include an area for the purchase of resources and fair-trade products.
- A multi-use sanctuary that while retaining its special atmosphere of holiness and its primary use as the heart of worship can be used more often and in different ways so widening the opportunity for people to experience the special qualities of the space.

CLOSING STATEMENT

As Mannofield Church seeks to move forward with the times it seeks to build on its reputation and heritage and discover appropriate ways for the church to function in a modern generation. As society progresses the Church needs to do so too in order to retain its significance within a fast-moving world.

We endeavour as a congregation to be known for our community focus as we seek to follow the emphasis of the Christian faith towards one of its central themes where we learn to 'care for our neighbours'.

In the introduction we highlighted our desire:-

- To play a crucial part in the community by providing the opportunity and encouragement for people to worship in a friendly and supportive atmosphere

- To capture the imagination of all generations living in our community, and welcome them into active involvement within our church family
- To use the gift of our building and its situation to make our church a place of busy activity and a hub for care and support for the community around us
- As we seek to make this Vision a reality we are very determined for this project not to be seen as a project that is for ourselves as a congregation but for others. Nor is it a project whose influence is only for the good of a current generation, we see this as a time in our history, when we can plan for and build a legacy that will include a suite of rooms fit for purpose for future generations too.

MANNOFIELD CHURCH



At The Heart
Of The Community!

Designed by Louise Matheson (P7B) & Scott Ledingham (P7A)
Airyhall Primary School



MANNOFIELD CHURCH OF SCOTLAND